



STEEL HOMES
MODULAR

STEEL HOMES
MODULAR

MODULAR HOMES

2023 CATALOG

Leading the future of modular steel construction.
We believe in publishing the boundaries of innovation
working smarter and faster.

BENEFITS AND TECHNOLOGY OF OUR CONSTRUCTION

REDUCE
WASTE AND
ADDITIONAL
ON-SITE
WORK
HOURS

ENVIROMENT
FRIENDLY

APPROVED BY
THE STATE OF
FLORIDA

100%
NON
COMBUSTIBLE
SUPPORT

"GREEN
SYSTEMS"
PRODUCED
FROM
RECYCLED
STEEL

MOLD
AND
TERMITE
RESISTANT

STEELHOMES

M O D U L A R

STEEL HOMES

M O D U L A R



MODULAR CONSTRUCTION



CATALOG DISCLAIMER

Our modular catalog does not contain pricing.

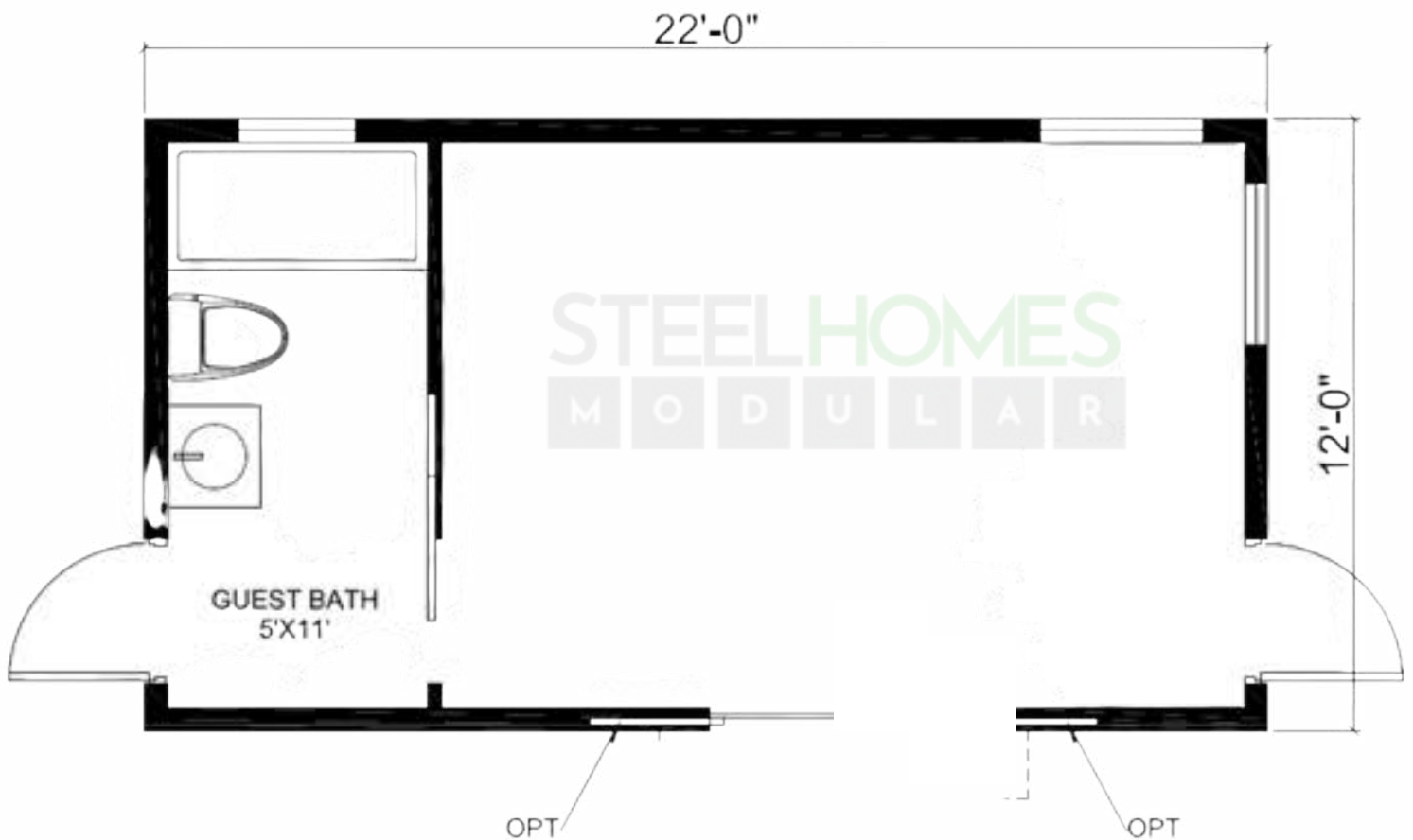
For pricing, land owners, developers, investors and realtors, please contact one of our sales representatives for more information.

All of our models are made with Light gauge steel framed structures and are hurricane resistant for up to 178 mph.



VIOLET CABANA

22' x 12' | 264 SQFT



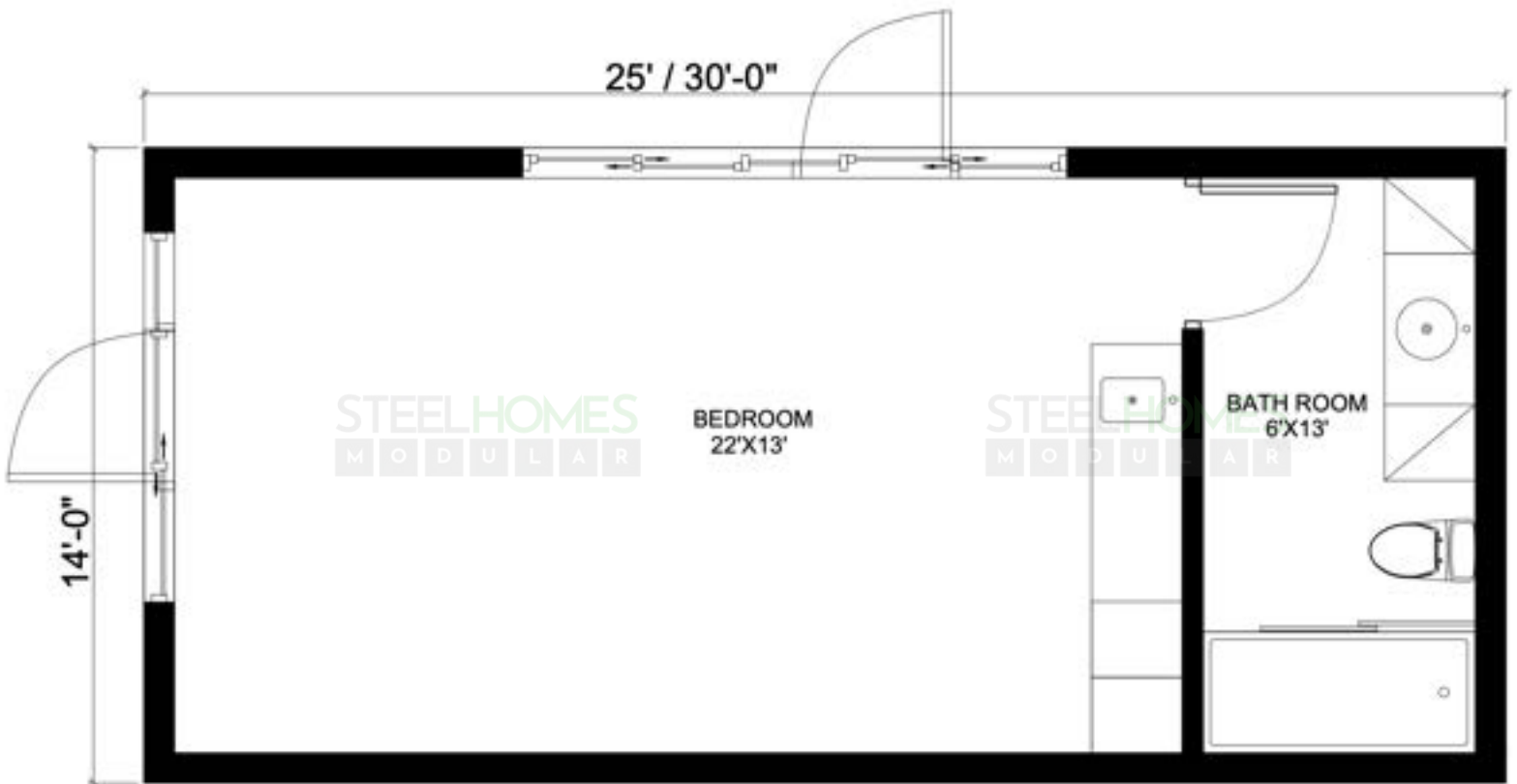
Model Features:

- 1 open living area and 1 full bathroom
- Large impact windows and doors
- Split unit A/C system connection
- LED Lights
- Tankless water heater
- Florida State Approval Pending



DAISY CABANA

30' x 14' | 420 SQFT



Model Features:

- 1 Bedroom and 1 Full Bathroom
- Impact windows and doors
- Split unit connection
- LED Lights
- Tankless water heater
- Florida State Approved



STEEL HOMES
MODULAR

ORCHID

58' x 15' | 870 SQFT



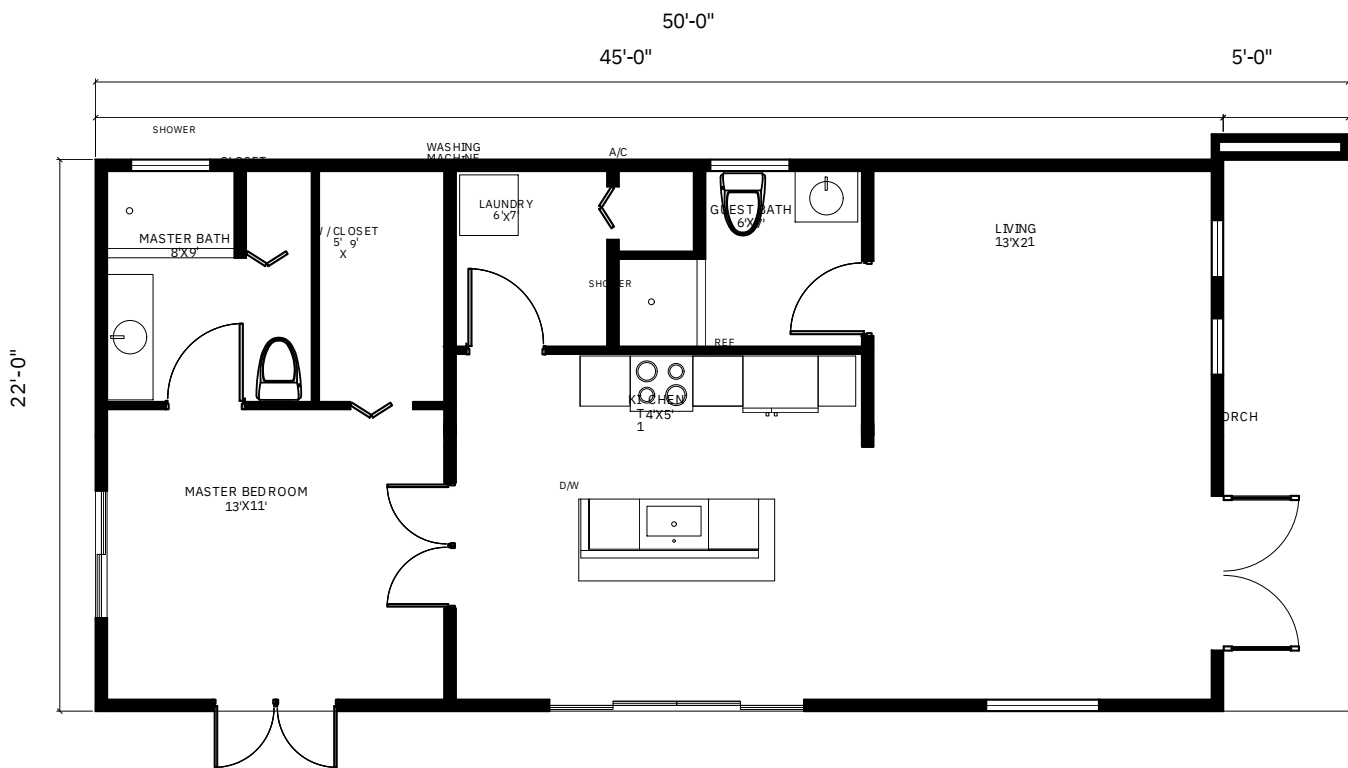
Model Features:

- 2 bedrooms and 2 full bathrooms
- Full kitchen with island
- Impact windows and doors
- Central A/C duct system
- LED Lights
- Tankless water heater
- Utility room
- Connections for washer and dryer
- Florida State Approved



TULIP CABANA

22' x 50' | 1,100 SQFT



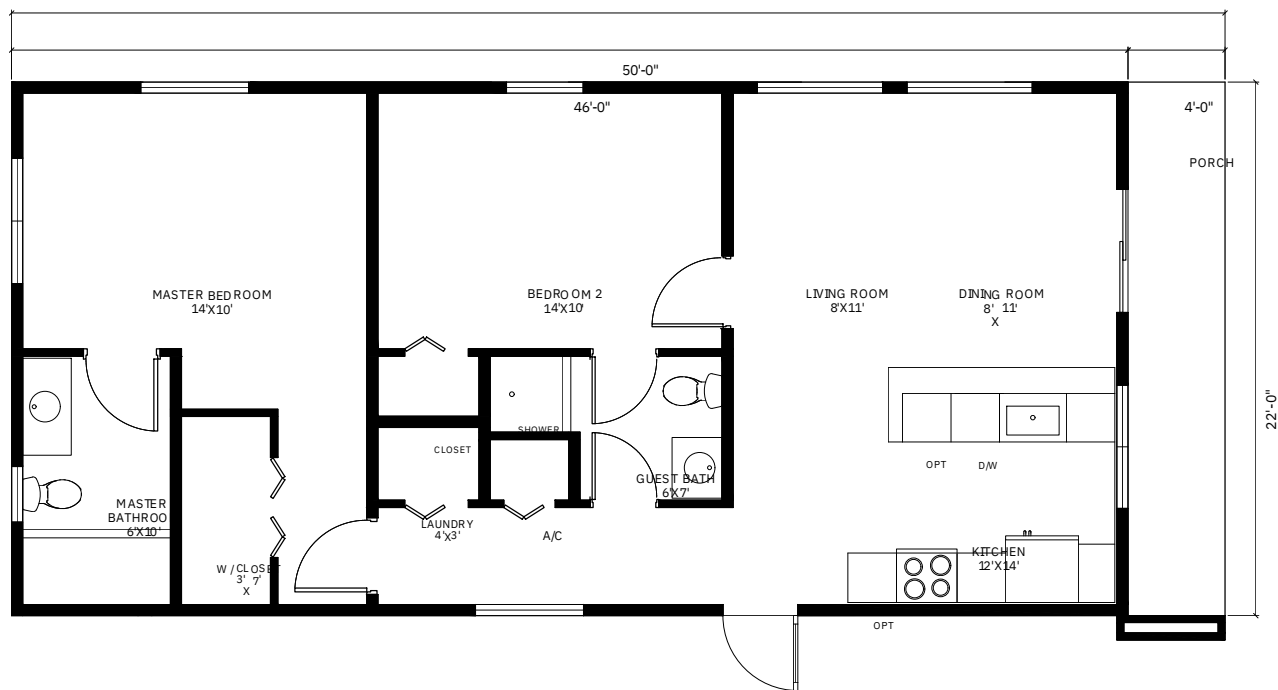
Model Features:

- 1 bedroom and 2 full bathrooms
- Full kitchen with island
- Impact windows and doors
- Central A/C duct system
- LED Lights
- Tankless water heater
- Utility room
- Connections for washer and dryer
- Florida State Approved



GARDENIA

22' x 50' | 1,100 SQFT



Model Features:

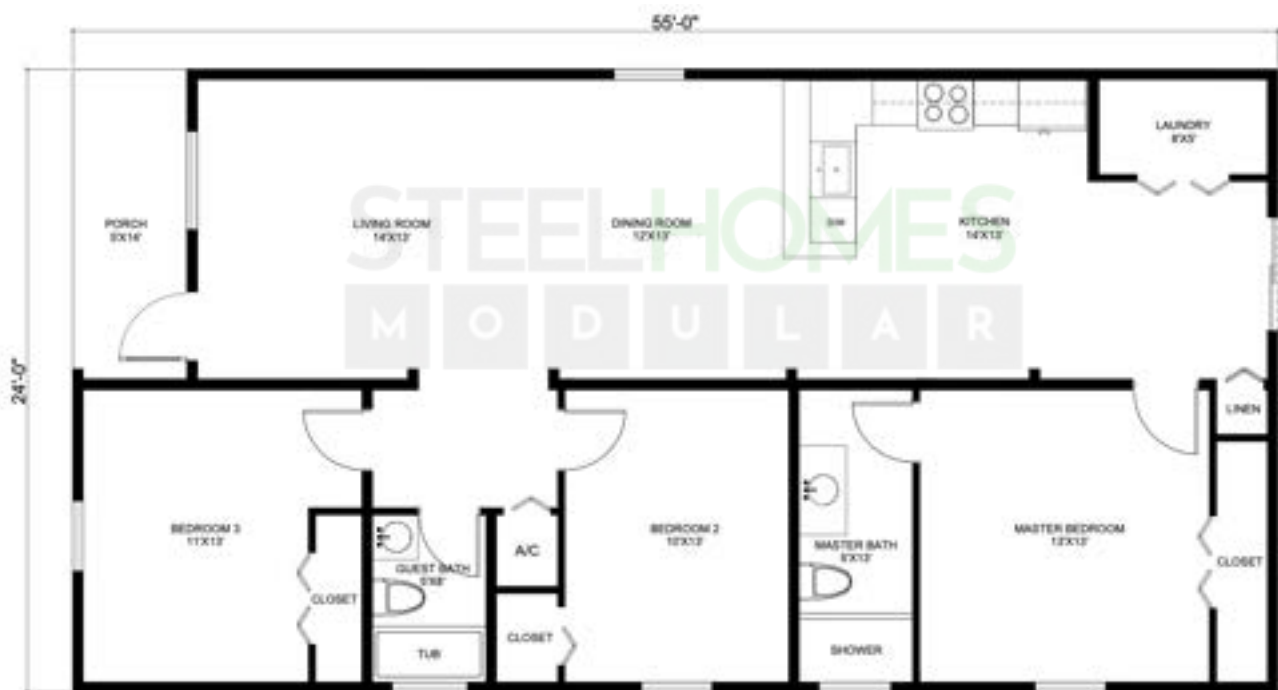
- 2 bedrooms and 2 full bathrooms
- Full kitchen
- Impact windows and doors
- Central A/C duct system
- LED Lights
- Tankless water heater
- Utility room
- Connections for washer and dryer
- Florida State Approved



SUNFLOWER

28' x 50' | 1,400 SQFT

This is our most popular model. This single family house comes in four different sizes: 1,200 sqft | 1,300 sqft | 1,400 sqft | 1,540 sqft



Model Features:

- Optional 13' x 20' Carport
- 3 bedrooms and 2 full bathrooms
- Full kitchen
- Impact windows and doors
- Central A/C duct system
- LED Lights
- Tankless water heater
- Utility room
- Connections for washer and dryer
- Florida State Approved



SAFFLOWER

28' x 55.6' | 1,557 SQFT



Model Features:

- Optional 13' x 20' Carport
- Impact doors and windows
- Full kitchen
- 3 Bedrooms 2 full bathrooms + Den
- Tankless water heater
- Utility room
- Connections for water and dryer
- Central A/C duct system
- LED Lights
- Florida state approved



HIBISCUS + GARAGE

30' x 53' | 1,590 SQFT



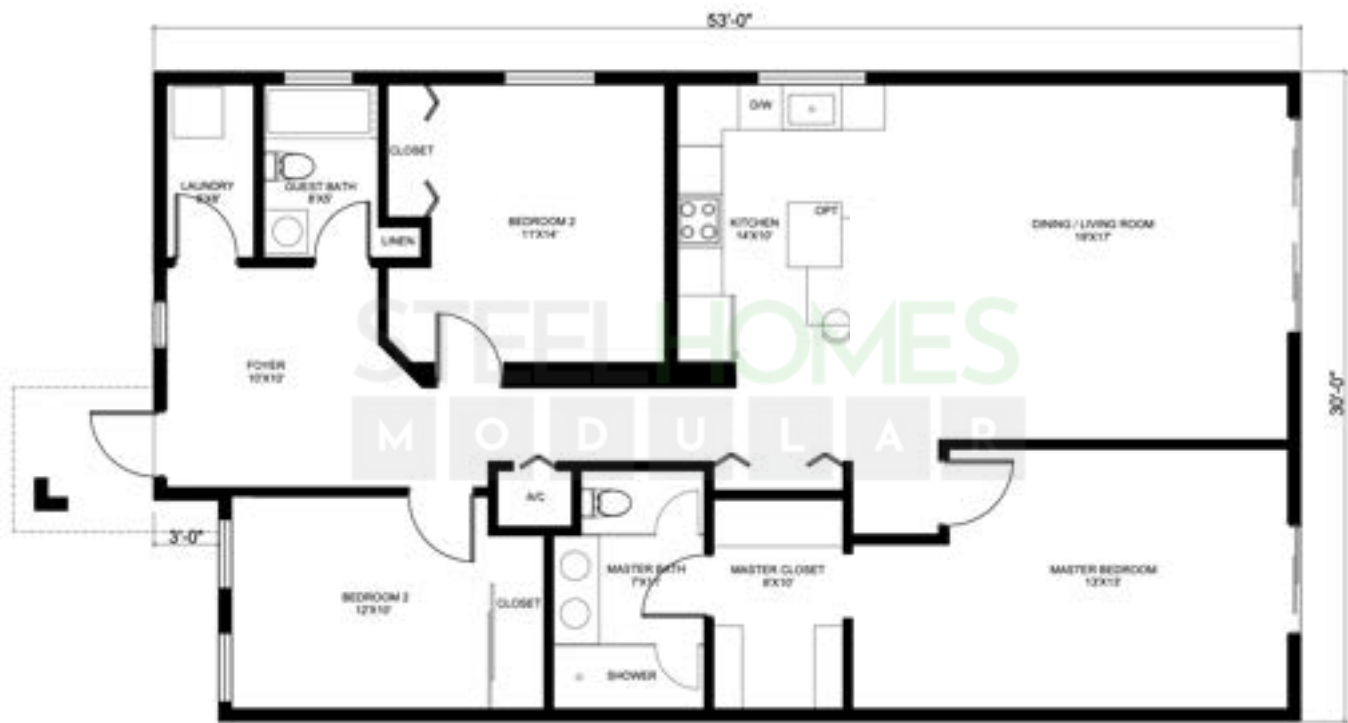
Model Features:

- Optional 13' x 22' sqft Garage
- 3 bedrooms and 2 full bathrooms
- Full kitchen
- Impact windows and doors
- Central A/C duct system
- LED Lights
- Tankless water heater
- Utility room
- Connections for washer and dryer
- Florida State Approved



HIBISCUS

30' x 53' | 1,590 SQFT



Model Features:

- Optional 13' x 22' sqft Garage
- 3 bedrooms and 2 full bathrooms
- Full kitchen
- Impact windows and doors
- Central A/C duct system
- LED Lights
- Tankless water heater
- Utility room
- Connections for washer and dryer
- Florida State Approved



PRIMROSE

40' x 40' | 1,600 SQFT

This single family house comes in two different sizes: 1,520 sqft | 1,600 sqft



Model Features:

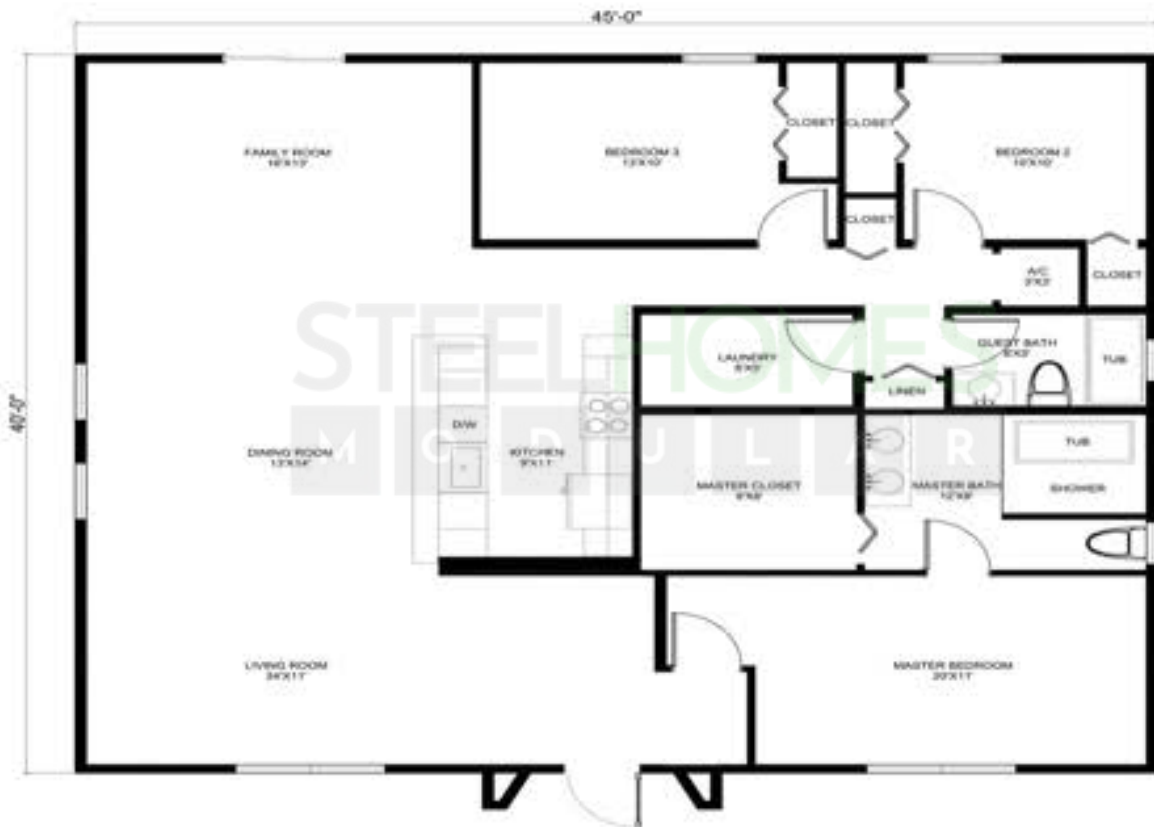
- 3 bedrooms and 2 full bathrooms
- Full kitchen with island
- Impact windows and doors
- Central A/C duct system
- LED Lights
- Tankless water heater
- Utility room
- Connections for washer and dryer
- Florida State Approved



ROSE CONTEMPORARY

40' x 45' | 1,800 SQFT

This single family house comes in four different sizes: 1,600 sqft | 1,800 sqft



Model Features:

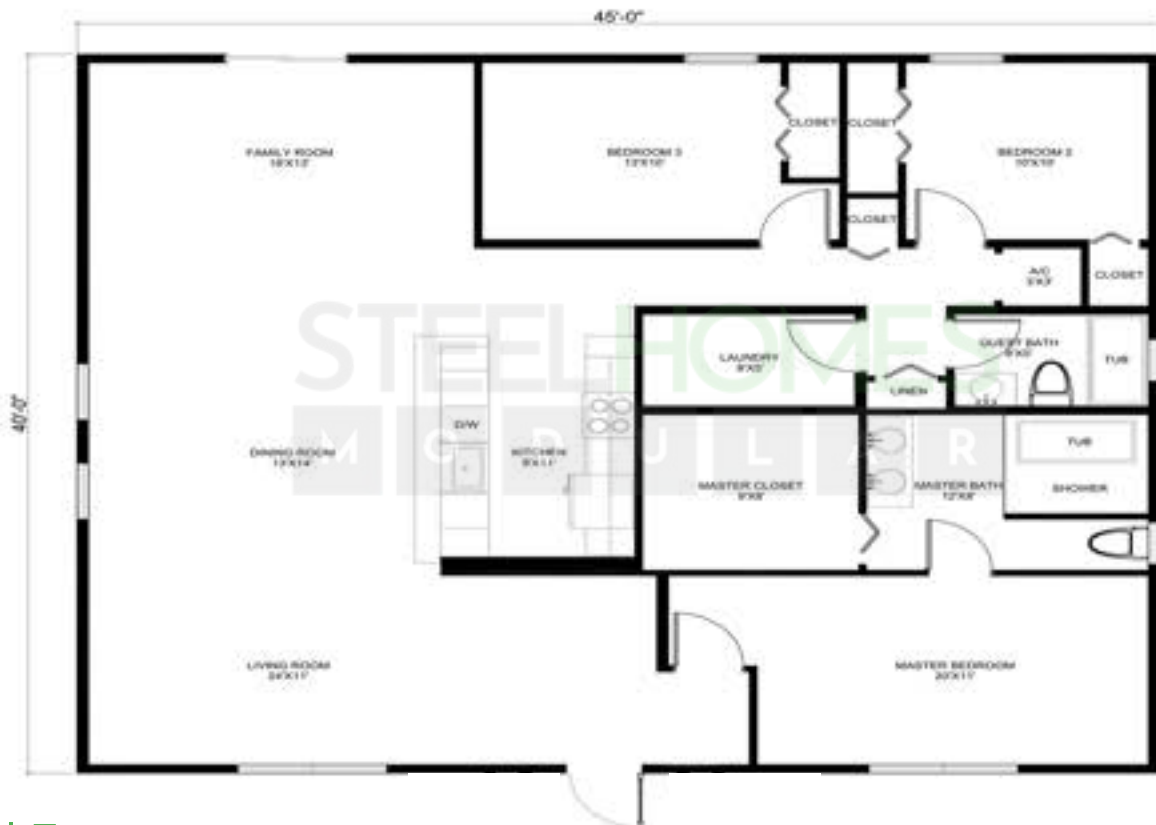
- 3 bedrooms and 2 full bathrooms
- Full kitchen with island
- Impact windows and doors
- Central A/C duct system
- LED Lights
- Tankless water heater
- Utility room
- Connections for washer and dryer
- Florida State Approved



ROSE MODERN

42' x 45' | 1,890 SQFT

This single family house comes in two different sizes: 1,600 sqft | 1,890 sqft



Model Features:

- 3 bedrooms and 2 full bathrooms
- Full kitchen with island
- Impact windows and doors
- Central A/C duct system
- LED Lights
- Tankless water heater
- Utility room
- Connections for washer and dryer
- Florida State Approved



AZALEA

24' x 37' | 1,776 SQFT



1st Floor



2nd Floor

Model Features:

- 3 bedrooms and 2 1/2 bathrooms
- Full kitchen
- Impact windows and doors
- Central A/C duct system
- LED Lights
- Tankless water heater
- Utility room
- Connections for washer and dryer
- Florida State Approved



LOTUS DUPLEX

26' x 45' EACH | 2,340 SQFT



1st Floor



2nd Floor

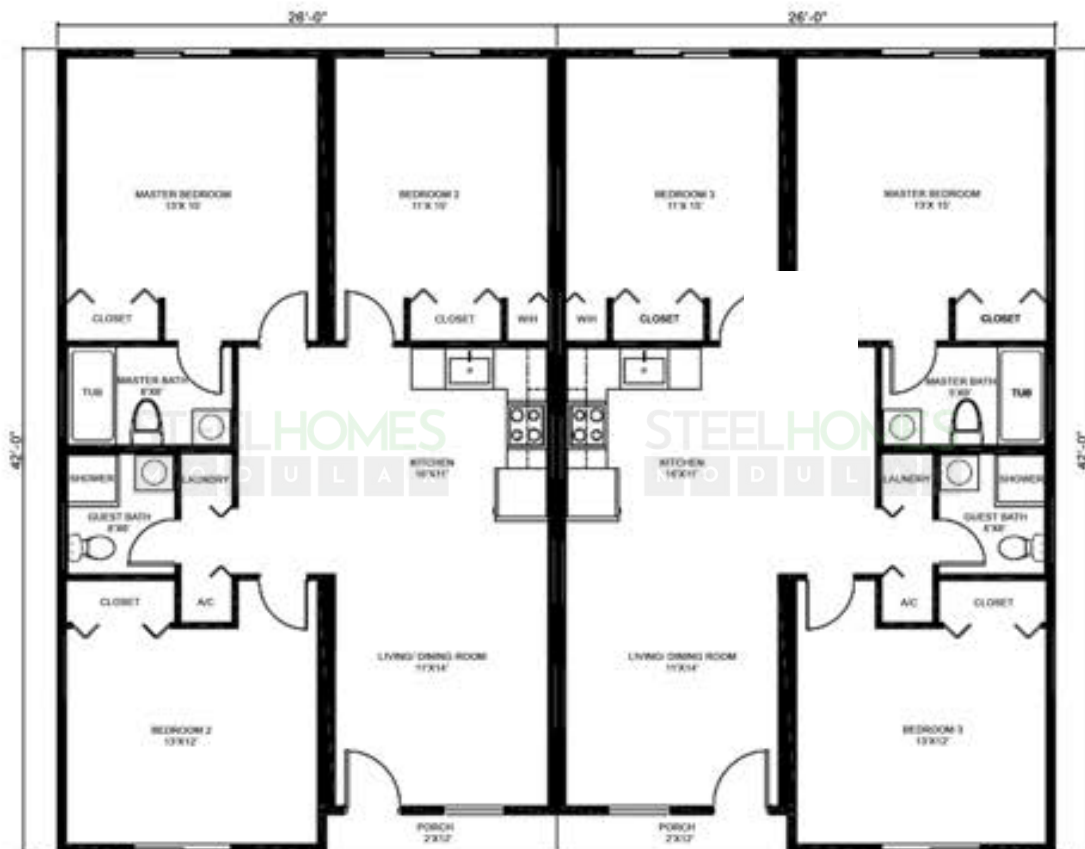
Model Features:

- 3 bedrooms and 2 full bathrooms
- Full kitchen
- Impact windows and doors
- Central A/C duct system
- LED Lights
- Tankless water heater
- Utility room
- Connections for washer and dryer
- Florida State Approved



LOTUS SIDE BY SIDE

26' x 42' EACH | 2,340 SQFT



Model Features:

- 3 bedrooms and 2 full bathrooms
- Full kitchen
- Impact windows and doors
- Central A/C duct system
- LED Lights
- Tankless water heater
- Utility room
- Connections for washer and dryer
- Florida State Approved



SUNFLOWER DUPLEX

24' x 55' EACH | 2,400 SQFT



1st Floor



2nd Floor

Model Features:

- 3 bedrooms and 2 full bathrooms
- Full kitchen
- Impact windows and doors
- Central A/C duct system
- LED Lights
- Tankless water heater
- Utility room
- Connections for washer and dryer
- Florida State Approved



LAVANDER

45' x 28' | 2,520 SQFT



1st Floor



2nd Floor

Model Features:

- 5 bedrooms and 4 bathrooms + Den
- Full kitchen
- Impact windows and doors
- Central A/C duct system

- LED Lights
- Tankless water heater
- Utility room
- Connections for washer and dryer
- Florida State Approved

COMING

SOON

CYPRESS

40' x 50' | 2,000 SQFT



Model Features:

- 4 bedrooms, 3 bathrooms, 1 den
- Optional 14'x24' Garage
- Full kitchen
- Impact windows and doors
- Central A/C duct system
- LED Lights
- Tankless water heater
- Utility room
- Connections for washer and dryer
- Florida State Approval Pending



JASMIN + GARAGE

24' x 50' | 2,400 SQFT



1st Floor



2nd Floor

Model Features:

- Optional 14'x30' Garage
- 4 bedrooms, 4 bathrooms, 1 office den
- Full kitchen
- Impact windows and doors
- Central A/C duct system
- LED Lights
- Tankless water heater
- Utility room
- Connections for washer and dryer
- Florida State Approval Pending



JASMIN

24' x 50' | 2,400 SQFT



1st Floor



2nd Floor

Model Features:

- 4 bedrooms, 4 bathrooms, 1 office den
- Full kitchen
- Impact windows and doors
- Central A/C duct system

- LED Lights
- Tankless water heater
- Utility room
- Connections for washer and dryer
- Florida State Approval Pending

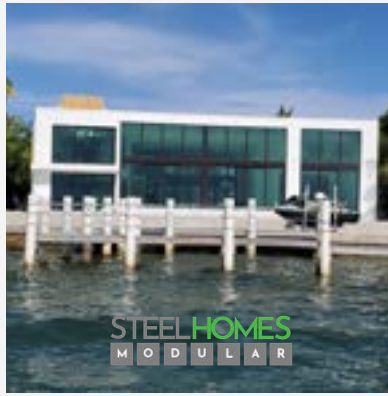
FINISHED HOMES



STEELHOMES
MODULAR



STEEL HOMES MODULAR



STAY CONNECTED



FOLLOW US
ON INSTAGRAM



FOLLOW US
ON TIKTOK



CHECK OUT
OUR WEBSITE

STEELHOMES MODULAR | 4300 NW 128 ST OPA-LOCKA, FL 33054 | 305-432-3006

